

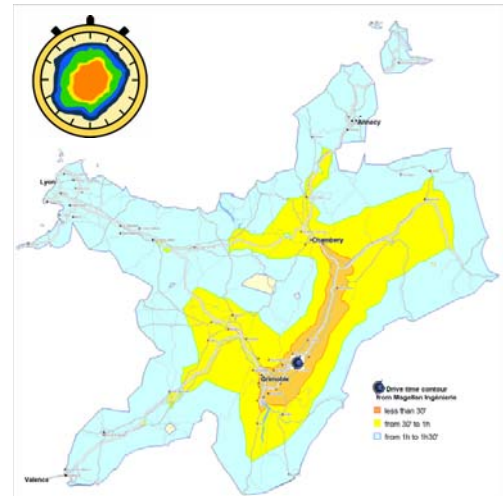
ChronoMap®, the premier fully plug&play MapInfo Professional® Add On that lets you easily create, analyze and combine proximity map !

The premier intelligent Plug&Play drive time analyst!

Comparing and combining access maps: ChronoMap® becomes a simulation tool that allows you to measure the effect of several scenarios concerning access to a given point. ChronoMap® thus allows you, for example, to evaluate which users will be penalized by installing a one-way access route to the train station or City Hall... or to simulate several building sites so as to determine the ideal site for a retail outlet, a health service center or an equipment depot.

Plug&Play!

ChronoMap performs drive time, distance and cost analysis on any free road database format, but also on MOST STANDARD ROAD DATABASE FORMAT. This means: ChronoMap knows **how to handle all road attributes** and relational database structure of vector road database from the most simple to the most complex one: NavTech®, AND®, Teletlas® StreetNet, Michelin®, ADC WorldMap®, GISnet®, Cartique®...



Current drive time

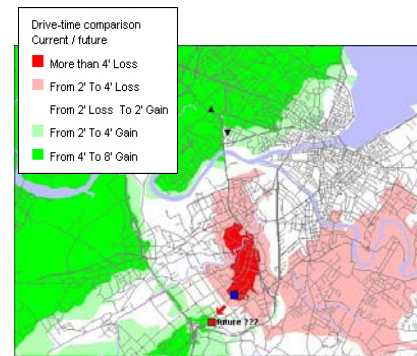


Future drive time from new location?



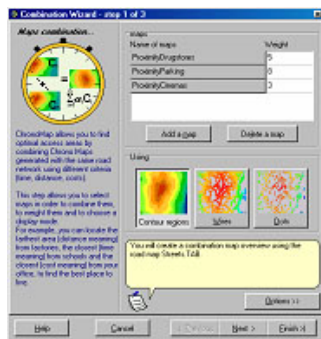
Compare!

ChronoMap® lets you test different case study, and shows you where you will **gain** time and where (and how much) you will **lose** time!



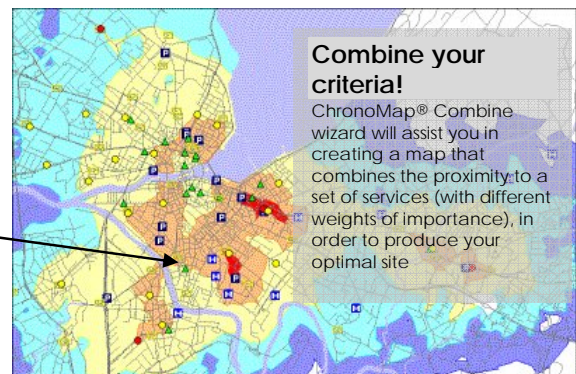
Differential Mapping

Looking for an **optimal** location according to a mix of criteria?



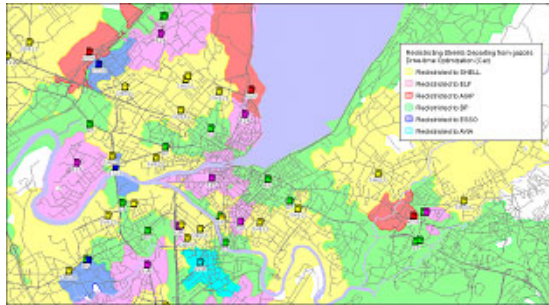
Tell ChronoMap® the relative **importance** of each...

...and let ChronoMap® show you where are your **best area!**



Time, distance or cost redistricting

State **multiple departure points** and apply redistricting: ChronoMap® will identify the potential interest area held by each of the points.

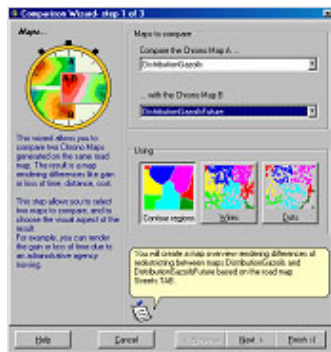
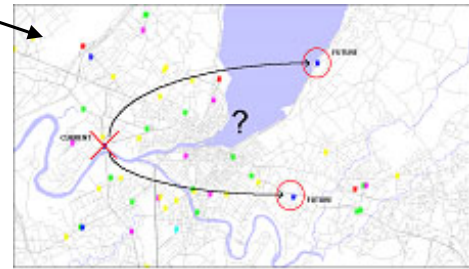


According to the access criteria used, ChronoMap® will allow you to divide up a territory by relating it to its most accessible point. Thus, given a particular geographical distribution of gas stations, you can assign the most accessible station to each zone within the community and its residents. In the same fashion, a City Hall can orient its voters to the voting district bureau closest to their home.

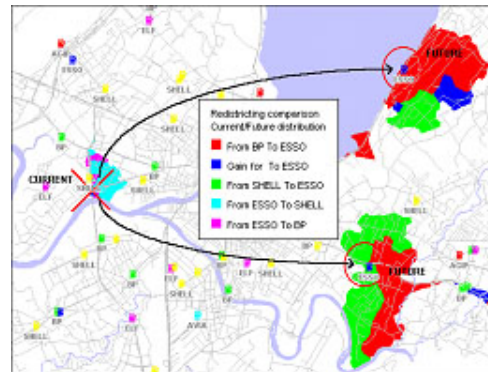
The territory is divided automatically into sectors according to access criteria. On this sample, stations areas from same companies are grouped.

What if?

Blue sector from preceding map seems to be very small. With ChronoMap®, try to move your outlet to other better placed location. Decide to close the station of the smallest sector and to open two new sites in the east of the city...



Easy comparison wizard will produce sector differential map!



ChronoMap® will show you:

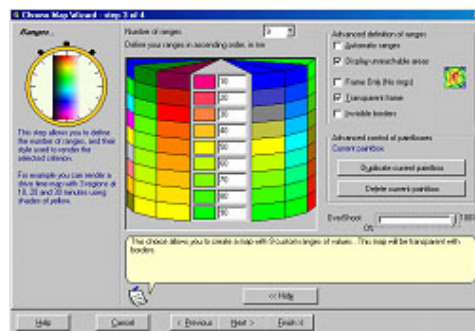
*How **big** are your new sectors!*

*Against which other competitor you will **fight!***

*Who will **gain** and who will **lose** part of territory!*

Focus on your territory, not on your software documentation!

- Nice and intuitive interface
- Wizard structure interface
- Sensitive help
- On line documentation, with lots of examples
- More than 100 functions highly ergonomically organized



ChronoMap® is designed and published by



DigiMap Data Services Inc
40 Kodiak Cres, Unit 13
Toronto, Ontario
M3J 3G5

Phone 1-877-344-4627 Fax 416.633.3248
sales@digimap.com http://www.digimap.com/