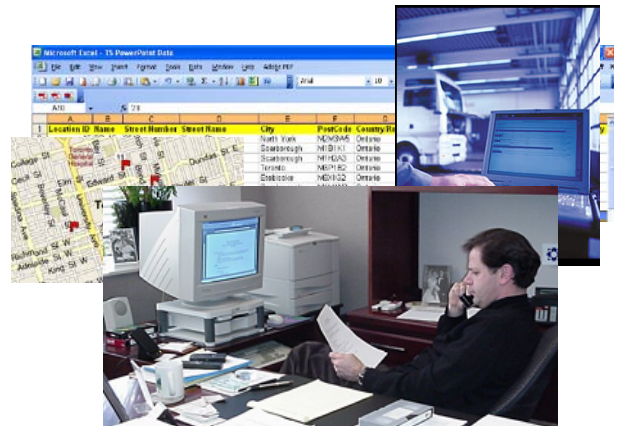


ChronoX TourSolver® , first scheduling optimization ActiveX, enables the fast and easy development of your Transport and Logistics application.

Fitting your professional needs

- Evaluate existing tours
- Improve productivity
- Improve customer service and reaction time for urgent requests
- Scheduling, controlling and forecasting
- Manage «high-density» tours (snow clearance, garbage collection, press distribution, ...)
- Taking into account competences, delivery days, time windows, ...
- Etc.



An easy to use and versatile tool

- Easy to integrate and set up
- Free choice of road network databases
- Numerous ways of exploiting results: display, reports, roadbooks ...
- Possibility of sending results to AVL services
- Etc.



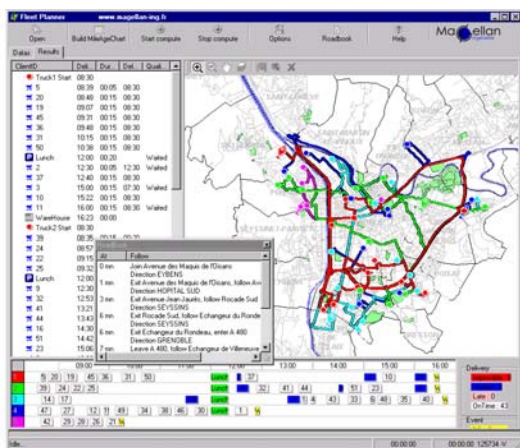
Easy to integrate

ChronoX TourSolver® is an ActiveX that is easily integrated within your existing applications. It does not require developers to have knowledge any specific terminology related to transport and logistics.

ChronoX TourSolver® is shipped with numerous samples that will allow developers to quickly start integrating tour optimization routines within their applications. It is also shipped with a true application sample which is an excellent starting point for the development of specifications that are related to the enterprise-wide requirements.

Exploiting results

The developer can decide on how he wants the results to be exploited. From the results found by ChronoX TourSolver® and using appropriate tools, the developer can create detailed and customisable roadbooks, display itineraries on a map, show Gantt diagrams, provide data to enterprise information systems, ...



* This application requires MapX from MapInfo

Major constraints and parameters handled (more than 60 constraints and settings)

<p>Customers</p> <p><u>Delivery constraints</u></p> <ul style="list-style-type: none"> Quantity (up to 8 dimensions/products) Possible visit days Requested characteristics (skills, vehicle, ...) Drive through restricted areas (avoid areas) <p><u>Time control</u></p> <ul style="list-style-type: none"> Visit time windows (customer availability) Punctuality, delay penalty Fixed and per unit unloading time <p><u>Management of existing routes</u></p> <ul style="list-style-type: none"> Original vehicle ID Visit sequence number Ensure the same vehicle performs the route 	<p>Vehicles</p> <p><u>Delivery constraints</u></p> <ul style="list-style-type: none"> Capacity (up to 8 dimensions/products) Drivers working days Vehicle/driver characteristics <p><u>Time control</u></p> <ul style="list-style-type: none"> Working times, lunch break Drivers hours legislation Overtime periods Fixed and per unit loading time Trips over several days (with night breaks) <p><u>Costs management</u></p> <ul style="list-style-type: none"> Cost/Km, cost/hr, night breaks costs Fixed costs of use / non-use Overtime costs
--	--

A solution adapted to your business:

Transport & Logistics

- Operations costs reduction
- Fill-in ratio improvement

Automatic vending

- Better coherence of routes
- Functional time gain

Home services

- Visit time windows management
- Required characteristics matching

Multi-compartmented distribution

- Fixed or mobile compartments fill-in optimization
- Operations costs reduction

Canvassing/prospecting

- Better inclusion in budget / better forecast
- Planing over several weeks

Maintenance/After sales services

- Vehicle/Driver and Customer needs matching
- Optimized route plan

ChronoX Routing Engine: geographical constraints

ChronoX® Routing Engine the multi-database and plug & play routing and mileagechart OCX, warranties the best itineraries ("the shortest", "the fastest", "the least expensive") taking into account the geographical constraints described in the road databases : access authorization depending on vehicles, speed profiles for the different types of roads, ...

ChronoX® Routing Engine and ChronoX TourSolver: complementary tools

Although their architectures are independent, ChronoX® Routing Engine and ChronoX TourSolver® are two complementary components for developing transport and logistics management applications. From location to be visited, ChronoX® Routing Engine delivers a mileage chart. Thanks to its specific methods, ChronoX TourSolver® optimizes the tours and delivers the ordered list of visits. ChronoX® Routing Engine can then provide the roadbooks and the data that will allow the itineraries to be displayed.

DigiMap Data Services Inc

40 Kodiak Cres, Unit 13
Toronto, Ontario
M3J 3G5

Phone 1-877-344-4627 Fax 416.633.3248
sales@digimap.com http://www.digimap.com/

System requirements

ChronoX TourSolver® works on any Windows platform.

ChronoX TourSolver® works with standard development tools (Visual Basic, Visual C++, PowerBuilder, Delphi or C++ Builder) and major Internet application servers.

A tour optimization problem including 1000 different locations needs a minimum of 16 Mb of RAM available.

[Click here to schedule a free demo !](#)

Learn more about Magellan Ingénierie's product range, extension and integration possibilities, software developer kits: www.magellan-ing.fr