



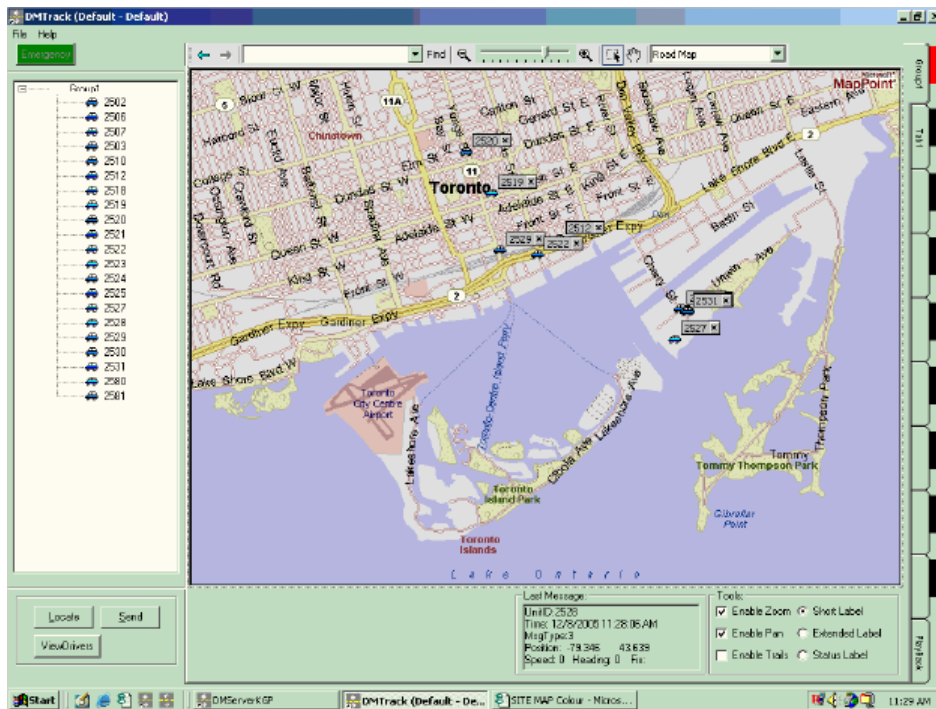
DMTrack AVL Application

DMTrack provides a clear, easy-to-use map interface for all your mobile asset monitoring.

DMTrack can monitor fleets as large as 100 units, while tracking each unit's course and operational status (loading/unloading, in transit, waiting, etc.) in real-time. Client-defined event data updates are automatically transmitted to the base station with no extra burden on your drivers.

Clients can improve operational safety and satisfy legislative requirements while providing better customer service, improved efficiencies and lower overheads

DMTrack is designed to operate in conjunction with Wi-Sys WS712X intelligent mobile GPS modules and Microsoft MapPoint or MapInfo MapX map display technology. **DMTrack** integrates the latest in digital map data into the product. DigiMap Data Services Inc. is a leader in the publishing and distribution of digital data products.



Applications

- ◆ Mobile Security Units
- ◆ Service Response Units
- ◆ Shorthaul Delivery Operations
- ◆ Roadside Assistance Units
- ◆ SnowPlow/Sander Operations
- ◆ Construction Equipment Operations



DigiMap Data Services Inc

DMTrack Solutions



Wi-Sys Communications Inc.

User Interface:

Immediate Manual Locate

- ◆ Request a real-time update of asset location and status

Automatic Mobile Reporting

- ◆ Mobile assets report automatically based on custom configuration in the WS712X modules

Multiple Map Page Views

- ◆ Map page -Single Unit
- ◆ Map page -Groups / All Units
- ◆ Map page - Fixed Map View

Emergency Alert Monitoring

- ◆ Emergency alert on map
- ◆ Audible and Visible Alarms

WS 712X Hardware:

The WS712X is an in-vehicle Intelligent GPS tracking module that monitors operational events such as position, over-speed, ignition On/Off and transmits this real-time data over Conventional and Trunk Radio systems.

Features:

- ◆ Stores up to 8,000 events and 400 waypoints
- ◆ Monitor vehicle speed, movement and stop events
- ◆ Monitor ignition, door open/close inputs
- ◆ GPS antenna disconnect alarm event

Additional Features:

- ◆ Custom Unit/Group IDs
- ◆ Custom Vehicle Icons
- ◆ Custom Speed/Date/Time Display
- ◆ Custom Event-based Icons
- ◆ Driver Name Display
- ◆ Real-time Route Playback
- ◆ Simulated Real-time Playback
- ◆ Selective replay by vehicle or group of vehicles
- ◆ Linkage to Existing Customer Databases

DMReport:

The DMTrack application and underlying data warehouse allow for the selection and generation of a series of standard reports that can provide detailed information regarding the activities of fleet vehicles.

- ◆ Chronological Report
- ◆ Vehicle Speed Report
- ◆ Vehicle Stop Report



DigiMap Data Services Inc

40 Kodiak Cres, Unit 13
Toronto, Ontario, M3J 3G5
Tel: 1-877-344-4627
Fax: 416.633.3248
www.digimap.com

Wi-Sys Communications Inc.

31B Richardson Side Road
Ottawa, Ontario, K2K 0A1
Tel: 613.254.7386
Fax: 613.254.7388
www.wi-sys.com