



## Snowplow Monitoring

DigiMap Data Services Inc and Wi-Sys Communications have partnered to provide a cost effective business tool to assist you with managing your snow and ice removal operations.

Communicating over your “existing” mobile radio infrastructure, the DMTrack Mapping software, combined with the in-vehicle WS7121 intelligent GPS tracking device, provides integrated voice, data and vehicle tracking capability. Fleet Managers can now monitor and coordinate the real-time activities of their snowplows from their office.

The WS7121 can be configured to provide Automatic Vehicle location (AVL) features such as time/distance/heading reporting as well as data on plow up/down, and sand/ salt application.

DMTrack maintains all historical reporting information such as route start and stop time, and provides real-time graphic displays on salting, sanding and plowing activity. The software can generate numerous reports based on the information received, providing you with information to help you better maintain legislated service levels.

The system utilizes your existing radio communications infrastructure for data and voice communications, providing you with cost benefits over operating on Public Data networks that charge ongoing monthly air-time fees. All data transmissions are totally coordinated with your existing voice communications activity.



### Features:

- ◆ Real-time location of plows displayed on DMTrack system
- ◆ Display Priority Roadway Status
- ◆ Real-time update of Routes Plowed
- ◆ Confirmation of plowed geographic areas
- ◆ Day, time and shift duration reports
- ◆ Comprehensive reports on time and quantity of salt and sand applications.
- ◆ Operates on Conventional radio systems. No re-occurring communication costs

***Maintain Legislated Service Levels  
For Snow and Ice Removal***



# DMTrack Solutions



## Snow Plowing Operations:

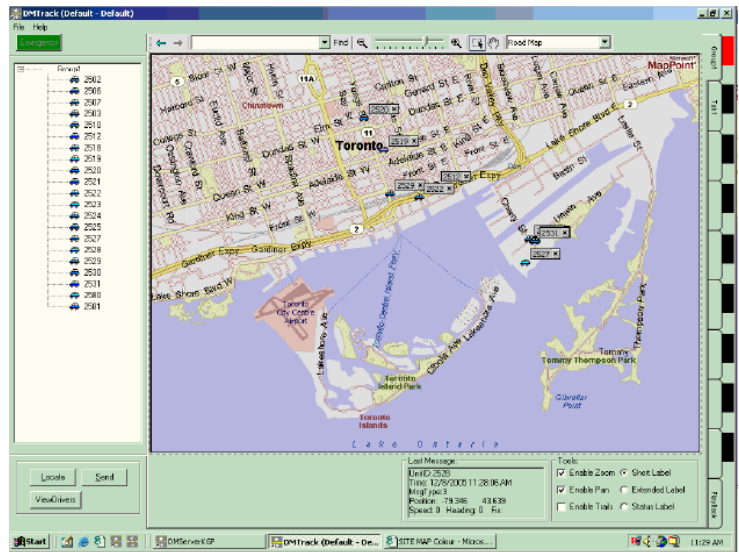
DMTrack provides you with a graphical interface to monitor and report on time and application of sand and salt, as well as providing real time information on servicing priority lists of roadways that you define. This information is invaluable to meeting legislated service levels and can lead to reduced liability relating to snow and ice removal services.

## DMTrack Software:

DM Track software is a client hosted AVL application designed specifically for commercial users who need fast updates on the location and status of all of their vehicles. You can configure multiple map displays to view groups of vehicles, and automatically pan the display to always keep them in view.

### Features:

- ◆ Manual and Automatic Continuous Location Monitoring
- ◆ Emergency Alert Monitoring
- ◆ Activity report generation
- ◆ Real and simulated activity playback



## WS 7121 Hardware:

The WS7121 is an in-vehicle Intelligent GPS tracking module that monitors operational events such as position, over-speed, ignition On/Off and transmits this real-time data over Conventional and Trunk Radio systems.

### Features:

- ◆ Stores up to 8,000 events and 400 waypoints
- ◆ Monitor vehicle speed, movement and stop events
- ◆ Monitor ignition, plow, sander inputs
- ◆ GPS antenna disconnect alarm event



**DigiMap Data Services Inc**  
 40 Kodiak Cres, Unit 13  
 Toronto, Ontario, M3J 3G5  
 Tel: 1-877-344-4627  
 Fax: 416.633.3248  
[www.digimap.com](http://www.digimap.com)

**Wi-Sys Communications Inc.**  
 31B Richardson Side Road  
 Ottawa, Ontario, K2K 0A1  
 Tel: 613.254.7386  
 Fax: 613.254.7388  
[www.wi-sys.com](http://www.wi-sys.com)