



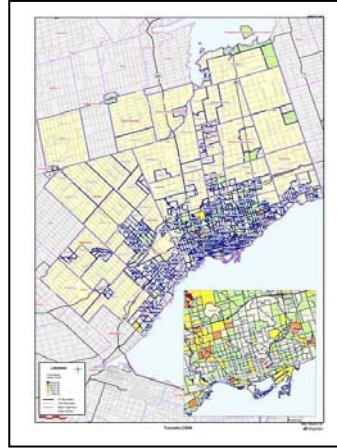
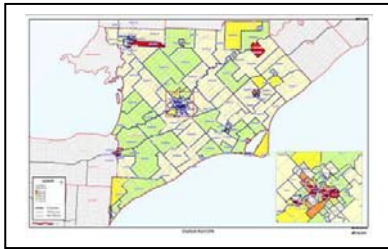
DigiMap Data Services Inc

# Healthcare Solutions

Substantial benefits in the provision of healthcare services can be realized through the application of location intelligent technology in planning and analysis.

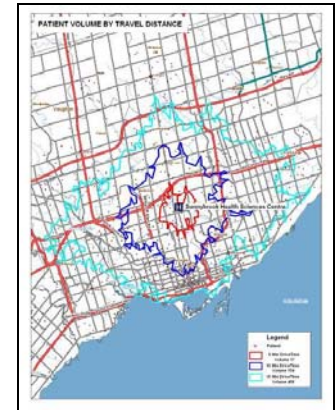
## Community Needs Analysis

- Estimation of needs within a regional healthcare framework
- Allocation of healthcare resources
- Coordination and integration of services across healthcare sectors



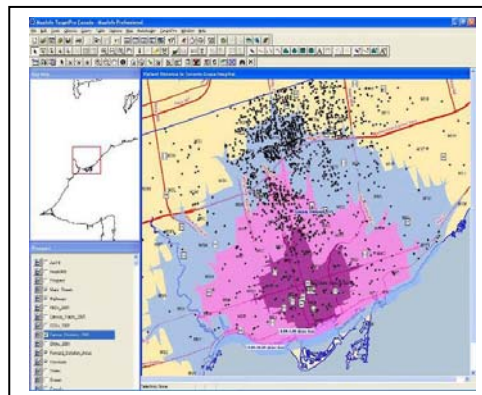
## Patient Profiling

- Definition of population based healthcare planning
- Assessment of healthcare needs and resource allocation
- Determination of patient travel patterns associated with access to healthcare



## Health Network Analysis

- Assessment of the impact of serviceability
- Mapping of patient location with geo-demographics
- Analysis of travel patterns to hospitals, specialty clinics, physicians etc.

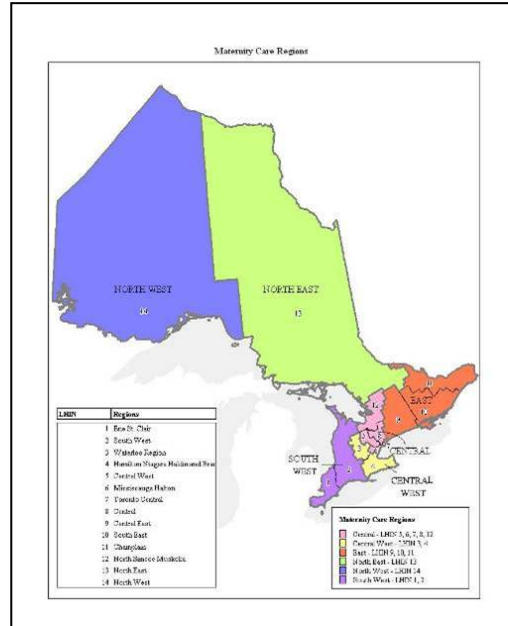
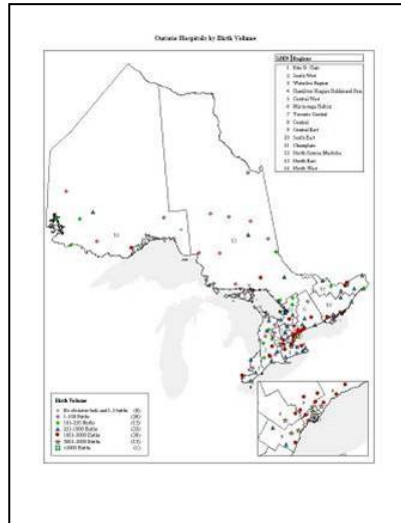




# Healthcare Solutions

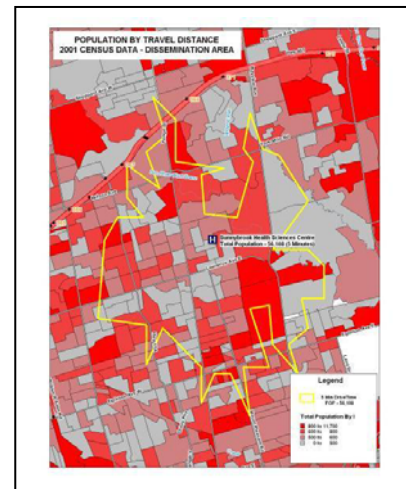
## Program Planning

- Assessment of healthcare variations between hospitals and related services
- Measurement of the effectiveness of program delivery



## Statistical Analysis

- Disease and illness analysis by demographic & geographic considerations
- Mapping of patient discharge data with estimates and projections
- Mapping of patient discharge data with Census attributes



For further information, please contact:

**DigiMap Data Services Inc**  
 40 Kodiak Cres, Unit 13  
 Toronto, Ontario, M3J 3G5  
 Tel: 1-877-344-4627  
 Fax: 1-866-366-8819  
[www.digimap.com](http://www.digimap.com)