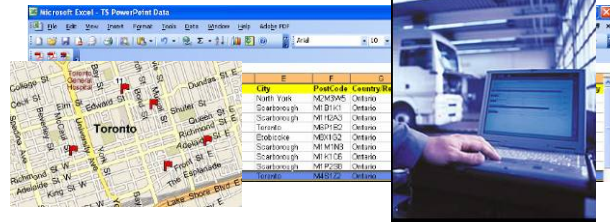


## A simple, powerful and affordable multi-vehicle scheduling tool

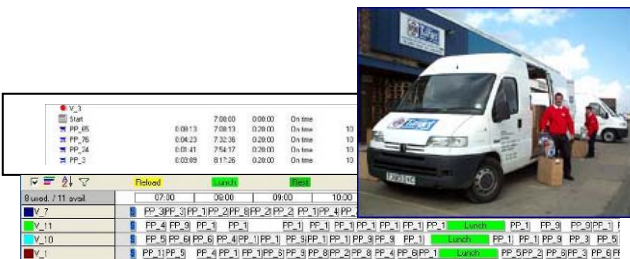
### Evaluate existing routes

- ◆ durations, costs, order/sequence
- ◆ constraints compliance
- ◆ from your own reports
- ◆ from a vehicle tracking service



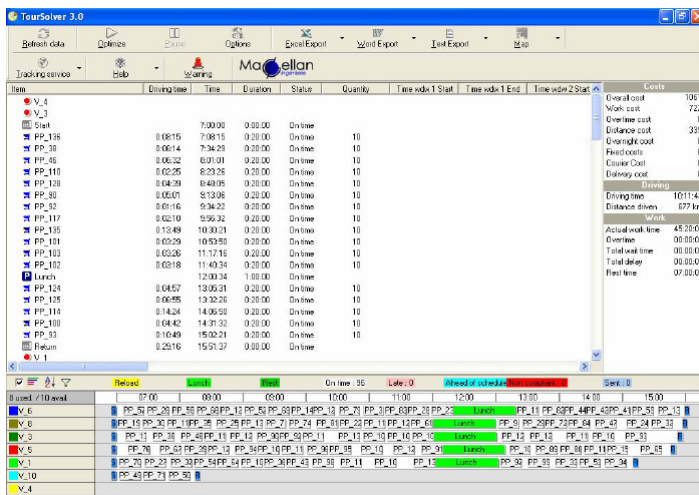
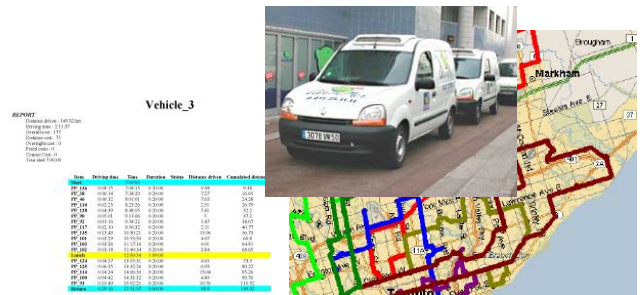
### Optimize, re-organize the routes

- ◆ select the routes to be optimized
- ◆ improve vehicles trips
- ◆ better customer distribution
- ◆ fill-in ratio optimization
- ◆ re-dimension the size of your fleet



### Transfer results

- ◆ Excel, Word or text format
- ◆ draw routes, print maps
- ◆ to drivers, other departments...
- ◆ to your vehicle tracking service provider



### Simple and fast implementation :

- Minimum training
- Standard Office tools
- Easy integration with the information system
- Data samples, on-line help

### Readily usable results :

- Accurate and clear itinerary mapping
- Results per route or for all the routes
- Numerous exports (planning, roadbooks) to Excel, Word or Text format
- Manual planning adjustments
- E-mail to a vehicle tracking service

### Savings in numerous areas :

- Adapted fleet size
- Planning time
- Vehicles fill-in ratios
- Operations costs
- Homogenous and manageable deployment

Major constraints and parameters handled (more than 60 constraints and settings)

## Customers

### Delivery constraints

- Quantity (up to 8 dimensions/products)
- Possible visit days
- Requested characteristics (skills, vehicle, ...)
- Drive through restricted areas (avoid areas)

### Time control

- Visit time windows (customer availability)
- Punctuality, delay penalty
- Fixed and per unit unloading time

### Management of existing routes

- Original vehicle ID
- Visit sequence number
- Ensure the same vehicle performs the route

## Vehicles

### Delivery constraints

- Capacity (up to 8 dimensions/products)
- Drivers working days
- Vehicle/driver characteristics

### Time control

- Working times, lunch break
- Drivers hours legislation
- Overtime periods
- Fixed and per unit loading time
- Trips over several days ( with night breaks)

### Costs management

- Cost/Km, cost/hr, night breaks costs
- Fixed costs of use / non-use
- Overtime costs

A solution adapted to your business :

### Transport & Logistics

- Operations costs reduction
- Fill-in ratio improvement

### Automatic vending

- Better coherence of routes
- Functional time gain

### Home services

- Visit time windows management
- Required characteristics matching

### Multi-compartmented distribution

- Fixed or mobile compartments fill-in optimization
- Operations costs reduction

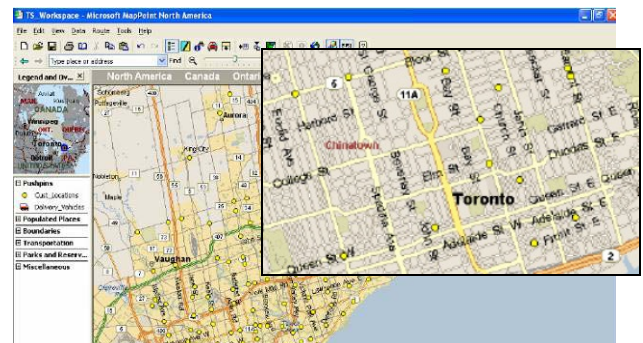
### Canvassing/prospecting

- Better inclusion in budget / better forecast
- Planing over several weeks

### Maintenance/After sales services

- Vehicle/Driver and Customer needs matching
- Optimized route plan

And Microsoft MapPoint's functionalities :



Map and see the key data of your company (customers geographical locations, revenues by regions or territories, ...), prepare a business trip, find out the best location for your new outlets, etc.

## DigiMap Data Services Inc

40 Kodiak Cres, Unit 13  
Toronto, Ontario  
M3J 3G5

Phone 1-877-344-4627 Fax 416.633.3248  
[sales@digimap.com](mailto:sales@digimap.com) <http://www.digimap.com/>

## System requirements

TourSolver for Microsoft MapPoint runs on Microsoft Windows 98, NT4 sp6, 2000, Millenium, XP and requires Microsoft MapPoint 2002. Minimum RAM requirements : 256 Mb (384 Mb under Windows XP)  
Microsoft Office Suite recommended for easier results analysis

Learn more about Magellan Ingénierie's product range, extension and integration possibilities, software developer kits : [www.magellan-ing.fr](http://www.magellan-ing.fr)

[Click here to schedule a free demo !](#)